

# SANITARY & WASTE WATER PUMPING SYSTEMS

Now you can install kitchen, bathroom,  
laundry and commercial facilities  
almost anywhere.



Email: [enquiries@dmlwallace.co.nz](mailto:enquiries@dmlwallace.co.nz) Web: [www.dmlwallace.co.nz](http://www.dmlwallace.co.nz)

**Auckland:**  
55 Maurice Road,  
Penrose  
Tel 09 622 9100  
Fax 09 622 9119

**Wellington:**  
Tel 04 567 8125  
Fax 04 567 8125

**Christchurch:**  
Unit B, 206 Hazeldean Road,  
Addington  
Tel 03 365 6453  
Fax 03 366 6995





Wallace Pumps solve all those waste disposal problems, big or small, with proven performance and reliability. If you require a solution to manage a remote location where installing conventional pipework is not possible, or are located below the sewer and require waste to be pumped up to the sewer line, we can help.

Neat compact units capable of efficiently and quietly handling a range of domestic services; powerful dry-mounted motors and fully sealed tanks are amongst features unique to the units.

For larger domestic or commercial applications Wallace Pumps supply a range of higher capacity models, twin pumps and in – ground storage systems for 24 hour storage requirements.

Sophisticated audio visual alarms and electronic water monitors are available for all pumping systems.

**PEACE OF MIND:**

Wallace Pumps gives a 2 year on-site parts and labour warranty on most of our small packaged systems and a 1 year parts and labour warranty on our in-ground systems.

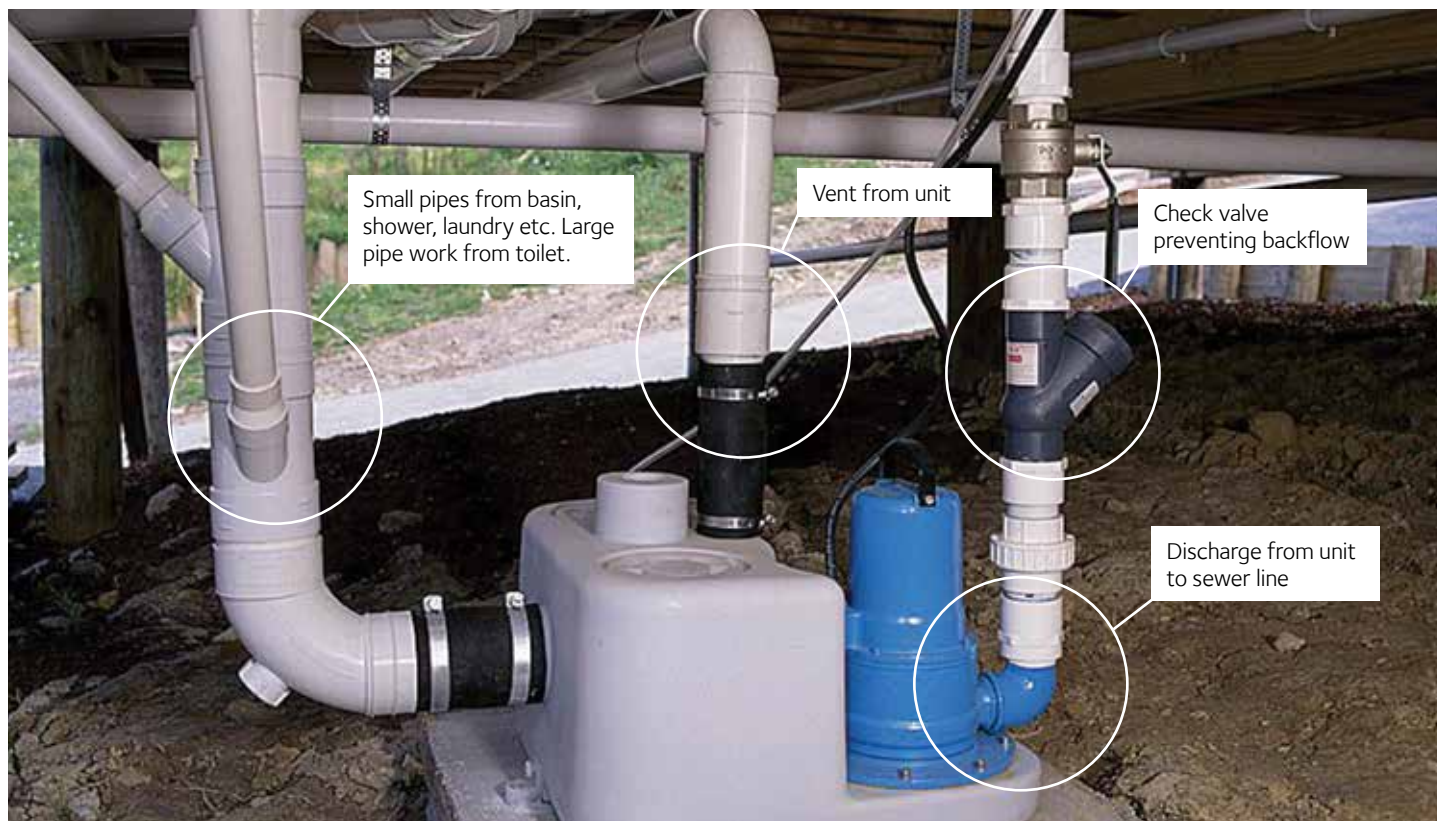
Doesn't that speak for itself?



## CUSTOMISED APPLICATIONS

With Wallace Pumps vast knowledge and expert advice from our team of sales engineers we can overcome any pumping obstacle with a designed solution that will work for your application.

If you need extra storage or extra lift or just more volume we can source or design a packaged system for your needs.



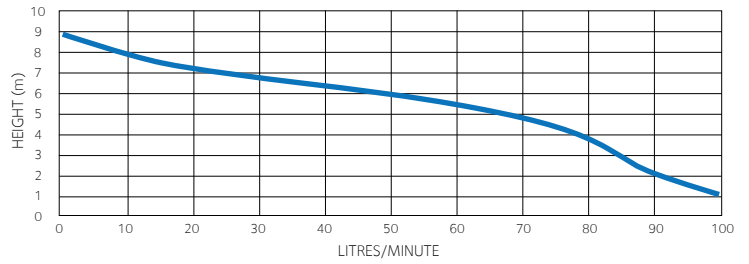
# SANISMART

## FEATURES

- Completely self contained
- 2 year back to base warranty
- Quiet, powerful and fully automatic
- Compact unit • High head and flow
- Easily installed and serviced
- 1 x W/C inlet plus 3 x optional inlets
- Connection fittings 1 x W/C 1 x optional inlet 1 x outlet (supplied)
- Blanking plugs for W/C inlet and 2 x bottom inlets (supplied)
- Carbon filter for internal venting (Check with your local Authority for compliance) (supplied)



PUMP PERFORMANCE: — SANISMART



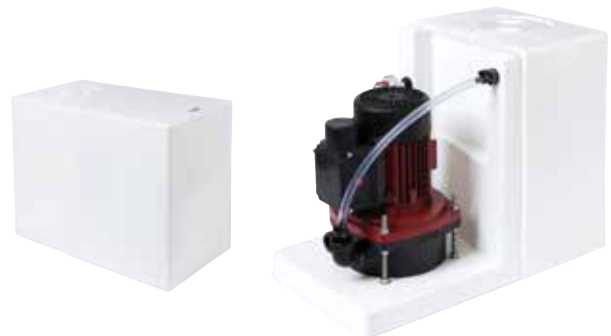
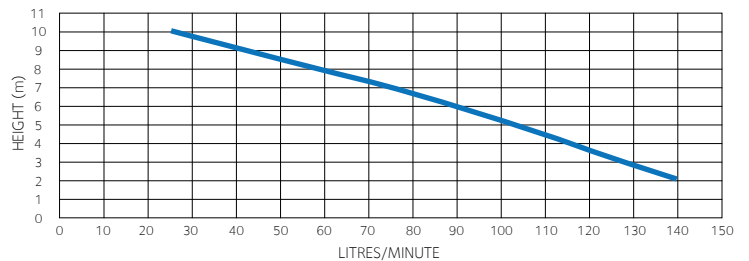
# UNISAN

## FEATURES

- Fully automatic grey water disposal unit
- NOT FOR USE WITH SEWAGE
- Dry mounted motor for ease of service
- 600 watt motor quiet and powerful
- Suitable for domestic and light commercial applications
- Capable of pumping to 16m SOH with high head impeller
- Maximum flow rate of 140lpm



PUMP PERFORMANCE: — UNISAN



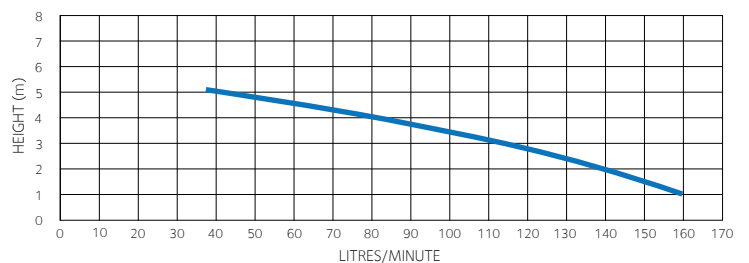
# MULTISAN

## FEATURES

- Fully automatic sewage and grey water disposal unit
- Dry mounted motor for ease of service
- 900 watt motor quiet and powerful
- Suitable for domestic and light commercial applications
- Capable of pumping to 10m SOH with high head impeller
- Maximum flow rate of 160lpm



PUMP PERFORMANCE: — MULTISAN



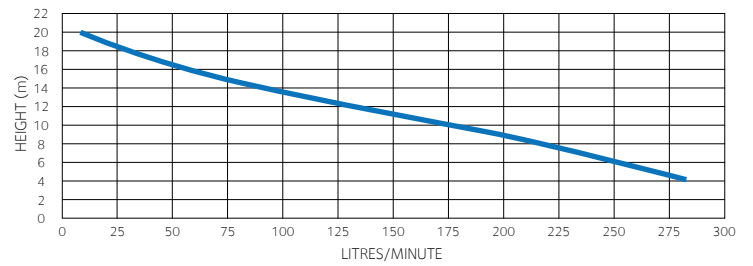
# SANIBOY G 180-16 W

## FEATURES

- Flood protected pump station
- Odour and gas tight plastic collecting tank
- Single stage centrifugal pump with horizontal discharge
- Open multi channel impeller with cutting system
- Fully submersible, pressure tight electric motor
- Thermal sensors embedded within winding
- Large diameter stainless steel rotor shaft, pre-lubricated bearings
- Combination of mechanical seal (silicon carbide) and lip seal in oil chamber
- Electronic control box for controlling and monitoring all important functions and advising any problems

**2**  
YEAR  
ON-SITE  
WARRANTY

PUMP PERFORMANCE: — SANIBOY G 180-16 W



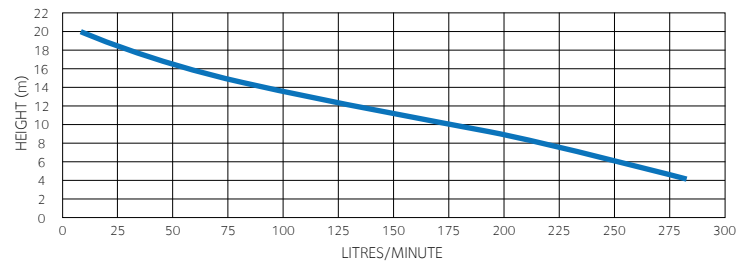
# SANIMASTER G

## FEATURES

- Fully automatic sewage and grey water disposal unit
- Twin pump
- For complete households and commercial applications
- Capable of pumping between 4 - 14m head
- Collecting tank storage capacity of 46 litres
- Discharge size 50mm
- Maximum flow rate 280lpm

**2**  
YEAR  
ON-SITE  
WARRANTY

PUMP PERFORMANCE: — SANIMASTER G



# SANIPOWER TP30V

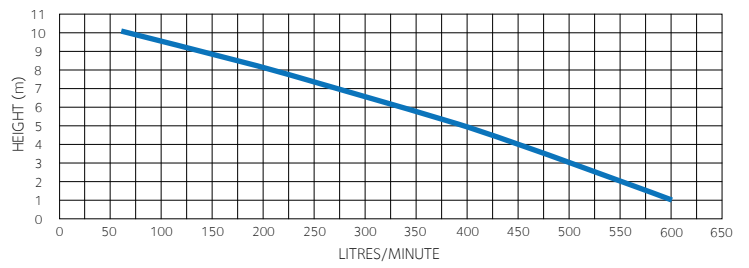
## FEATURES

- Fully automatic sewage and grey water disposal unit
- Single pump
- Suitable for multiple fixtures and light commercial applications
- Capable of pumping to 10m head
- Collecting tank storage capacity of 11 litres
- Discharge size 50mm
- Maximum flow rate 600lpm

**2**  
YEAR  
ON-SITE  
WARRANTY



PUMP PERFORMANCE: — SANIPOWER TP30V



# SANISTAR 105 W OR 205 W

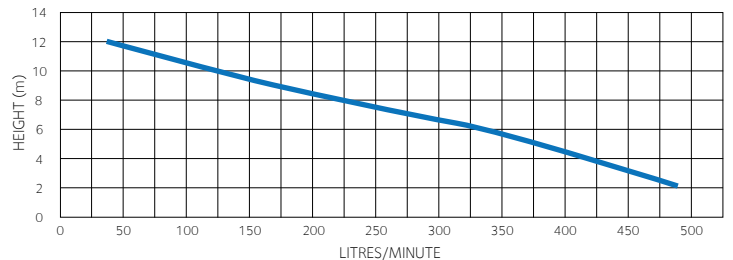
## FEATURES

- Fully automatic sewage and grey water disposal unit
- Single pump (105W) or twin pump (205W)
- For complete households and commercial applications including restaurants, hotels and hospitals
- Integrated swing check valve
- Alternating duty/standby operation for twin system
- Collecting tank storage capacity of 70 litres (105W) or 95 litres (205W)
- Discharge size 80mm
- Capable of pumping to 10m head
- Maximum flow rate 490lpm

**2**  
YEAR  
ON-SITE  
WARRANTY



PUMP PERFORMANCE: — SANISTAR 105 W OR 205W



SANISTAR 105 W

SANISTAR 205 W

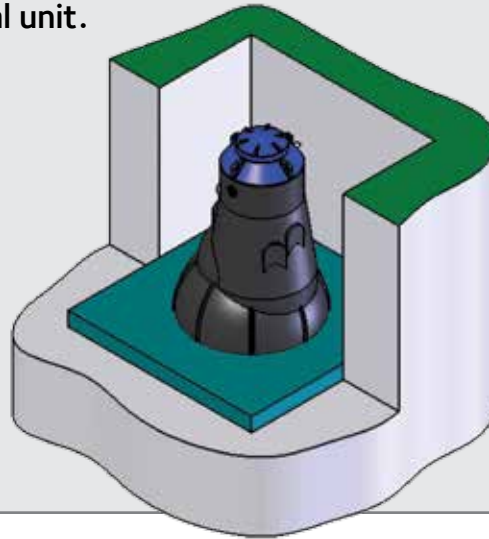
# IN-GROUND

Fully automatic sewage and grey water disposal unit.

**1**  
YEAR  
ON-SITE  
WARRANTY

## FEATURES

- Single pump or twin pump options
- For complete households or commercial applications where a 24 hour storage requirement is necessary
- Capable of pumping up to 28m in height
- Collecting tank storage capacity of 250, 1100, 1550 or 3300 litres
- Anti-flotation design to prevent lifting in rain soaked ground situations
- Polyethylene tank construction
- Built in alarm system optional on selective pumps



### PUMP CHAMBER WP250



### IN-GROUND PUMP CHAMBER 1000



### IN-GROUND PUMP CHAMBER 1500



### IN-GROUND PUMP CHAMBER 3000



### W-750SK

MOTOR RATING:  
0.75KW / 230V / 7AMPS  
750SK  
MAX HEAD: 8M  
MAX FLOW: 450LPM

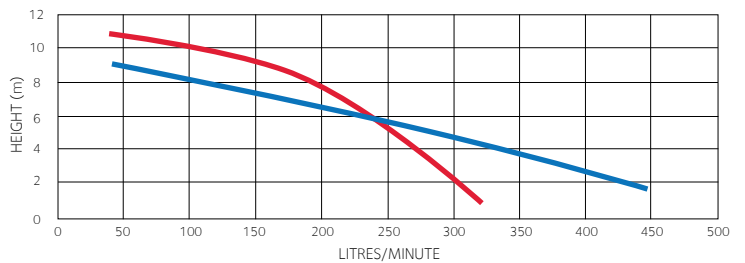
### TGR 15WA

MOTOR RATING:  
1.5KW / 230V / 7AMPS  
TGR 15WA  
MAX HEAD: 20M  
MAX FLOW: 180LPM

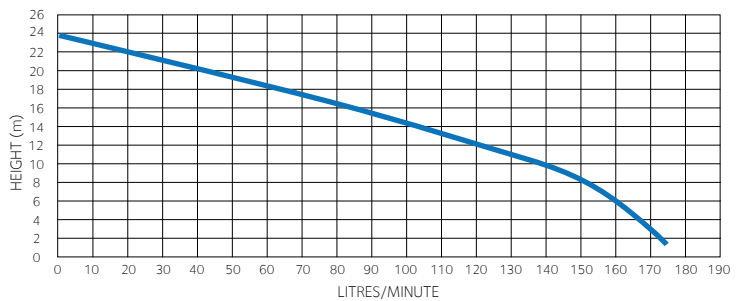
### GRP26 WA

MOTOR RATING:  
1.8KW / 230V / 11.5AMPS  
GRP26WA  
MAX HEAD: 28M  
MAX FLOW: 350LPM

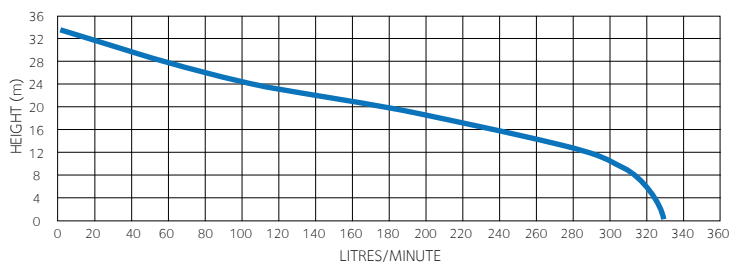
PUMP PERFORMANCE: — W-750 SV — W-750 SK



PUMP PERFORMANCE: — TGR 15WA



PUMP PERFORMANCE: — GRP 26WA / GRP 26DA



W-750 SK



TGR 15WA



GRP 26WA / DA

# ALARM SYSTEMS AND MONITORS

Pumping equipment is expensive, by utilising one of our monitors or alarm systems you can protect your investment and avoid any problem that may occur. In some council areas these type of early warning or protection systems are mandatory.

## COMPUTERISED PUMP CONTROL PANEL

Automatic or manual operated. LED Display

- Borehole pumps: Automatic water supply, Irrigation, filling tank
- Submersible pumps: Automatic sewage and waste water pumping from sump, audio/visual high level alarm
- Centrifugal pumps: Used in various industries such as agriculture, water supply, chemical, pulp and paper, fertilizer, petrochemical etc
- Over/under current protection



## COMPUTERISED ALTERNATING TWIN PUMP CONTROL PANEL

Automatic or manual operated. Two pumps with alternating duty cycle and LED display for each pump's status

- Automatic Twin Booster Pumpset: Water supply to large establishments on demand, Irrigation
- Automatic Twin Submersible pumps: Sewage & Waste water pumping from sump/tanks, with audio/visual high level alarm
- Over/under current protection



## ELECTRONIC WATER MONITOR

Multi function alarm and/or control panel for Unisan, Multisan, and Sanistar sewage and waste water pumps

- Packaged pump systems are often subject to misuse in commercial or domestic or tenancy situations and may have flooding problems causing property damage purely because the users are not familiar with their operation.
- The Electronic Water Monitor features a range of connection options and protection methods to provide failsafe non-flooding solutions.



## HIGH/LOW LEVEL ALARM

Audio – Visual High/Low level alarm for use with sewage and waste water sumps or water tanks

- Warns against flooding. Spilling of hazardous sewage and waste water due to submersible pump failure or overflowing of potable water from the holding tank can happen if there is no prior warning to the user.
- Wallace Pumps have produced the Electronic High/Low Level Alarm system. It will give a prior audio-visual warning of the possible overflow so remedial action can be taken.



# Pumping Systems Technical Data

## SANISWART

- Completely self contained
- Quiet, powerful and fully automatic
- Compact unit
- Easily installed and serviced
- 2 year warranty (Back to Base)
- High head and flow
- 1 x W/C inlet plus 3 x optional inlets
- Connection fittings 1 x W/C 1 x optional inlet 1 x outlet (supplied)
- Blanking plugs for W/C inlet and 2 x bottom inlets (supplied)
- Carbon filter for internal venting (Check with your local Authority for compliance) (supplied)

### Technical Data

Motor Power (kW): 0.4  
Temp continuous / Max: 40 / 60°C  
Voltage 50Hz (V): 230-240  
Cable (m): 1.6  
Nominal Current (A): 1.7  
Weight : 6KG  
Tank Volume: 6 litres  
Delivery Connection: 25mm  
Delivery Pipe: 25mm  
25mm Swing Check: Supplied  
25mm Isolating Valve: Supplied  
Overall dimensions: 420(L) x 300(H) x 180(W)mm

## UNISAN

- Completely self contained
- Quiet, powerful and fully automatic
- Dry mounted motor and pump
- Easily installed and serviced
- Designed and built in New Zealand for New Zealand conditions
- 2 year warranty
- High head and flow
- Can be remotely installed
- Gas and water tight collection tank
- Multiple choice of waste inlet positions
- Audible alarm featuring phase interruption switching off auto discharging machines (optional)
- Solenoid valve to isolate water supply to plumbing fixtures draining to the pump (optional)

### Technical Data

Motor Power (kW): 0.6  
Temp continuous / Max: 60 / 95°C  
Voltage 50Hz (V): 230-240 / 1 phase  
Cable (m): 3.0  
Nominal Current (A): 3  
Weight : 12KG  
Tank Volume: 25 litres  
Delivery Connection: 25mm Male  
Delivery Pipe: 25mm or 32mm PVC  
32mm Swing Check: Supplied  
32mm Isolating Valve: Supplied  
Overall dimensions: 496(L) x 410(H) x 284(W)mm  
Max Head Height: 1.6m with high head impeller  
Max Flow: 140lpm

## MULTISAN

- Completely self contained
- Quiet, powerful and fully automatic
- Dry mounted motor and pump
- Easily installed and serviced
- Designed and built in New Zealand for New Zealand conditions
- 2 year warranty
- High head and flow
- Can be remotely installed
- Marine models also available
- Choice of pan entry position
- Audible alarm featuring phase interruption switching off auto discharging machines (optional)
- Solenoid valve to isolate water supply to plumbing fixtures draining to the pump (optional)

### Technical Data

Motor Power (kW): 0.9  
Temp continuous / Max: 40 / 60°C  
Voltage 50Hz (V): 230-240 / 1 phase  
Cable (m): 1.5  
Nominal Current (A): 5  
Weight: 14KG  
Tank Volume: 17 litres  
Delivery Connection: 32mm Female  
Delivery Pipe: 25mm or 32mm PVC  
32mm Swing Check: Supplied  
32mm Isolating Valve: Supplied  
Overall dimensions: 520(L) x 305(H) x 210(W)mm  
Max Head Height: 1.0m with high head impeller  
Max Flow: 160lpm

## SANIBOY G 180-16 W

- Flood protected pump station
- Odour and gas tight plastic collecting tank
- Single stage centrifugal pump with horizontal discharge
- Open multi channel impeller with cutting system
- Fully submersible, pressure tight electric motor
- Thermal sensors embedded within winding
- Large diameter stainless steel rotor shaft, pre-lubricated bearings
- Combination of mechanical seal (silicon carbide) and lip seal in oil chamber
- Electronic control box for controlling and monitoring all important functions and advising any problems

### Technical Data

Motor Input (kW): 1.5  
Motor Output (kW): 1.1  
Voltage 50Hz (V): 230-240 / 1 phase  
Speed (rpm): 2900  
Nominal Current (A): 7.5  
Weight: 37KG  
Tank Inlet Height: 180mm  
Tank Volume: 46 litres  
Inlet Size: DN100 (x2), DN50  
Air Vent Size: DN70  
Max Head Height: 1.4m  
Min Head Height: 4m  
Dimensions (mm): 673(L) x 451(H) x 500(W)

## SANIPOWER TP30V

- Odour and gas tight composite plastic collecting tank
- Single stage centrifugal pump with horizontal discharge
- Vortex impeller with spherical clearance of 30mm
- Fully submersible, pressure tight electric motor
- Stainless steel rotor shaft, pre-lubricated bearings
- Combination of mechanical seal (silicon carbide) and lip seal in oil chamber
- Pneumatic level control with pressure switch
- Electronic control box motor over run period, over load protection, temperature control of winding and automatic motor restart

### Technical Data

Motor Input (kW): 1.8  
Motor Output (kW): 1.2  
Voltage 50Hz (V): 230-240 / 1 phase  
Speed (rpm): 2900  
Nominal Current (A): 7.5  
Weight: 32KG  
Tank Inlet Height: 180mm  
Tank Volume: 11 litres  
Inlet Size: DN100 (x2), DN50  
Air Vent Size: DN50  
Max Head Height: 1.0m  
Min Head Height: 1m  
Max Flow: 600lpm

## SANIMASTER G

- Flood protected twin pump station
- Odour and gas tight plastic collecting tank
- Open multi channel impeller with cutting system
- Single stage centrifugal pump with horizontal discharge
- Fully submersible, pressure tight electric motors
- Thermal sensors embedded within windings
- Large diameter stainless steel rotor shaft, pre-lubricated bearings
- Combination of mechanical seal (silicon carbide) and lip seal in oil chamber
- Electronic control box for controlling and monitoring all important functions and advising any problems

### Technical Data

Motor Input (kW): 1.5  
Motor Output (kW): 1.1  
Voltage 50Hz (V): 230-240 / 1 phase  
Speed (rpm): 2900  
Nominal Current (A): 7.5  
Weight : 62KG  
Tank Inlet Height: 180mm  
Tank Volume: 46 litres  
Inlet Size: DN100 (x2), DN50  
Air Vent Size: DN70  
Max Head Height: 1.4m  
Min Head Height: 4m  
Max Flow: 280lpm

## SANISTAR 105 W / 205 W

- Flood protected single and twin pump station
- Odour and gas tight plastic collecting tank
- Flexible union with integrated soft ball check valve
- Non clogging impeller
- Fully submersible, pressure tight electric motor
- Thermal sensors embedded within winding
- Large diameter stainless steel rotor shaft, pre-lubricated bearings
- Combination of mechanical seal (silicon carbide) and lip seal in oil chamber
- Electronic control box for controlling and monitoring all important functions and advising any problems

### Technical Data

Motor Input (kW): 1.6  
Motor Output (kW): 1.1  
Voltage 50Hz (V): 230-240 / 1 phase  
Speed (rpm): 2900  
Nominal Current (A): 7.0  
Total Weight: 105 W: 64KG 205 W: 92KG  
Tank Inlets: DN100 (x3), DN150 (x2), DN40 (x1)  
Total Volume: 105 W: 70 litres 205 W: 95 litres  
Operating Volume: 105 W: 30 litres 205 W: 45 litres  
Discharge flange: 80mm  
Air Vent Size: 70mm  
Max Head Height: 1.0m  
Max Flow: 490lpm

## IN-GROUND PUMP CHAMBER 1000/1500/3000

- New Zealand designed & manufactured polyethylene chamber
- Suitable for all types of ground conditions
- Certified to AS/NZS 4766 polyethylene storage tanks for wastewater and chemicals
- Certified to AS/NZS 1546.1 on site domestic wastewater treatment facilities
- The geometric shape allows for maximum strength under compression while also offering the advantage of anti-floatation for wet areas
- An electrical junction box is installed on the top of the tank where the power cable for the pump and the high level alarm float switch are terminated

### PUMP CHAMBER WP250

- Unit can be installed above ground or below ground
- Designed for secondary system
- A storage type pump station where limited space is available

## W-750SK Technical Data

Total Volume: 1000: 1100 litres 1500: 1550 litres 3000: 3300 litres  
Dimensions (mm): 1000: 2150 x 1180 1500: 2150 x 1420 3000: 2150 x 2000  
Total Weight: 1000: 146KG 1500: 176KG 3000: 248KG  
Inspect Hatch (mm): 290 Ø  
Pump Type: W-750SK  
Motor Rating: 0.75kW, 230v, 7amp  
Weight (pump): 22KG  
Max Head: 8m (including sump depth)  
Alarm (type): Audio/Visual Float Activated  
Inlet: 100mm PVC Class D  
Discharge: 50mm PVC Clas D  
Valves: 50mm Non Return & Isolating

## TGR 15WA Technical Data

Total Volume: 1000: 1100 litres 1500: 1550 litres 3000: 3300 litres  
Dimensions (mm): 1000: 2150 x 1180 1500: 2150 x 1420 3000: 2150 x 2000  
Total Weight: 1000: 143KG 1500: 183KG 3000: 238KG  
Inspect Hatch (mm): 290 Ø  
Pump Type: TGR 15WA  
Motor rating: 1.5kW, 230v, 7amp  
Weight: 19 Kg  
Max Head: 20m  
Alarm (type): Audio/Visual Float Activated  
Inlet: 100mm PVC Class D  
Discharge: 50mm PVC Clas D  
Valves: 50mm Non Return & Isolating

## GRP26 WA Technical Data

Total Volume: 1000: 1100 litres 1500: 1550 litres 3000: 3300 litres  
Dimensions (mm): 1000: 2150 x 1180 1500: 2150 x 1420 3000: 2150 x 2000  
Total Weight: 1000: 155KG 1500: 185KG 3000: 266KG  
Inspect Hatch (mm): 290 Ø  
Pump Type: GRP26WA  
Motor Rating: 1.8kW, 230v, 11.5amp  
Weight (pump): 33KG  
Max Head: 28m (including sump depth)  
Alarm (type): Audio/Visual Float Activated  
Inlet: 100mm PVC Class D  
Discharge: 50mm PVC Clas D  
Valves: 50mm Non Return & Isolating



Email: [enquiries@dmlwallace.co.nz](mailto:enquiries@dmlwallace.co.nz)

Web: [www.dmlwallace.co.nz](http://www.dmlwallace.co.nz)

Available from